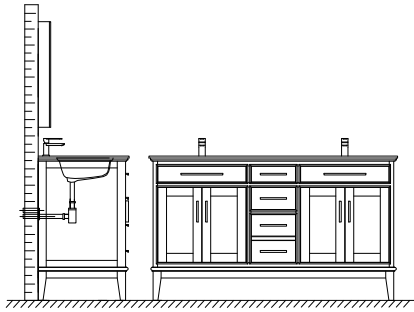


WYNDHAM COLLECTION

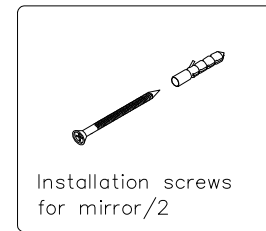
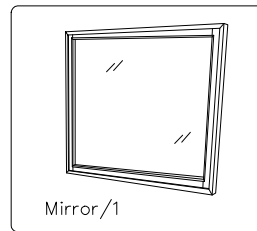
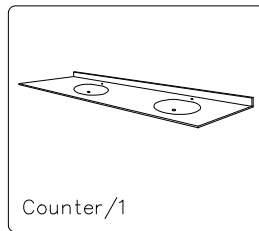
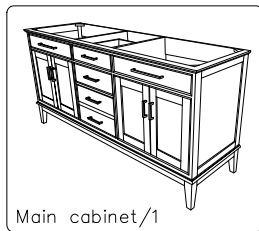


- Prior to installation please check received items against the "Packing List". Please report any missing items to your retailer immediately.
- Protect all surfaces from sharp objects, high heat sources, direct prolonged sunlight and chemical hazards.
- Professional installation recommended.
- Backsplash comes in two pieces.

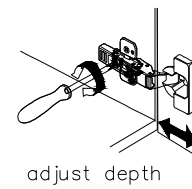
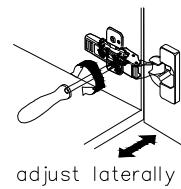
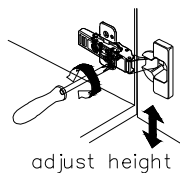
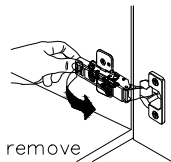
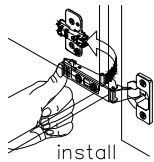


PACKING LIST

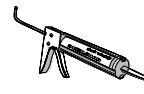
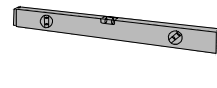
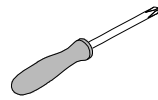
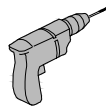
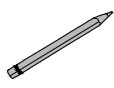
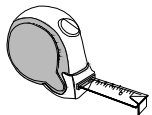
Not all components may be included, depending upon your purchase



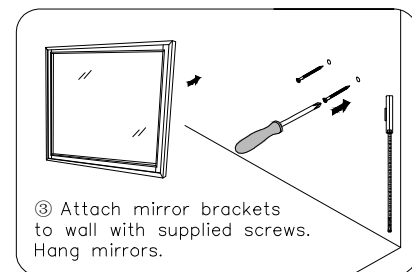
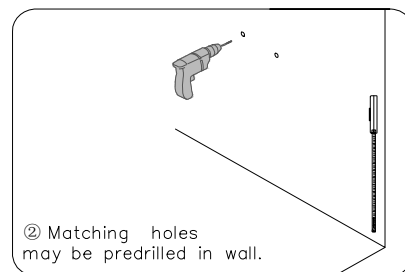
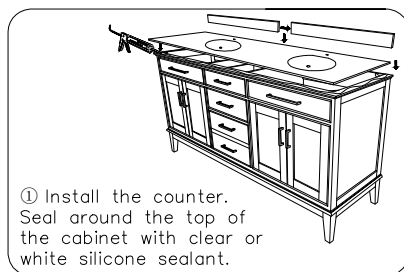
INSTALLATION AND ADJUSTMENT OF HINGES



REQUIRED TOOLS NOT IN BOX



INSTALLATION INSTRUCTIONS



WC-1616-60-DBL Installation Guide