

Dimensional Document

Viega ProPress® Stainless Fittings

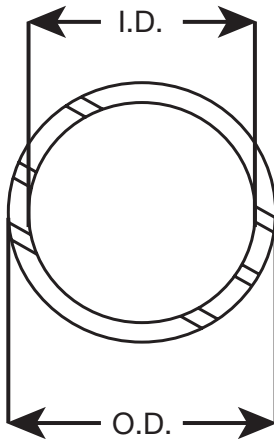


This document is subject to updates. For the most current Viega technical literature please visit viega.us.



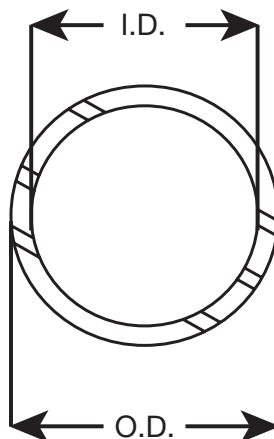
Viega products are designed to be installed by licensed and trained plumbing and mechanical professionals who are familiar with Viega products and their installation. **Installation by non-professionals may void Viega LLC's warranty.**

Viega ProPress Pipe Stainless Steel ASTM A312 - Models 0103 / 4003

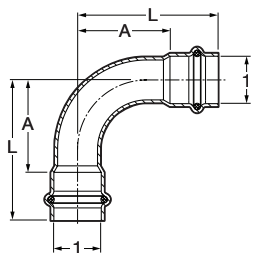


Part No.		Size (in)	O.D. (in)	I.D. (in)	Wall Thickness (in)	Length (ft)
S/S 304	S/S 316					
87000	82000	½	0.63	0.50	0.06	20
87005	82005	¾	0.88	0.75	0.06	20
87010	82010	1	1.13	1.00	0.06	20
87015	82015	1¼	1.38	1.26	0.06	20
87020	82020	1½	1.63	1.50	0.06	20
87025	82025	2	2.13	2.00	0.06	20

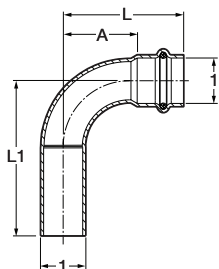
Viega ProPress ECO-Pipe Stainless Steel ASTM A554 - Model 0108



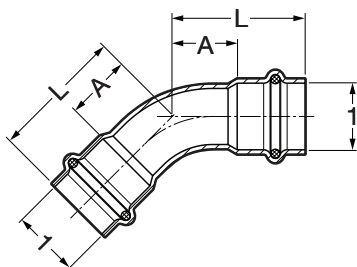
Part No.	Size (in)	O.D. (in)	I.D. (in)	Wall Thickness (in)	Length (ft)
S/S 304					
87050	½	0.63	0.55	0.04	20
87055	¾	0.88	0.78	0.05	20
87060	1	1.13	1.03	0.05	20
87065	1¼	1.38	1.26	0.06	20
87070	1½	1.63	1.51	0.06	20
87075	2	2.13	2.01	0.06	20

Viega ProPress 90° Elbow Stainless Steel P x P - Models 6016 / 4016


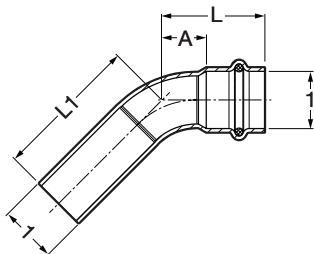
Part No.		Size (in)	A (in)	L (in)
S/S 304	S/S 316	1		
85402	80400	1/2	1.12	1.87
85407	80405	3/4	1.73	2.64
85412	80410	1	1.87	2.78
85417	80415	1 1/4	1.65	2.69
85422	80420	1 1/2	1.98	3.41
85427	80425	2	2.55	4.14

Viega ProPress 90° Elbow Stainless Steel FTG x P - Models 6016.1 / 4016.1


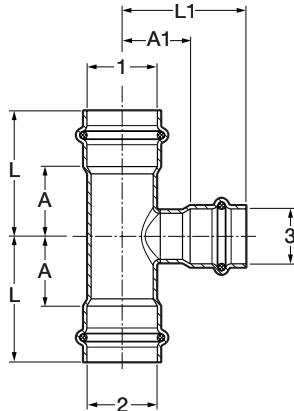
Part No.		Size (in)	A (in)	L (in)	L1 (in)
S/S 304	S/S 316	1			
85492	80490	1/2	1.12	1.87	1.99
85497	80495	3/4	1.45	2.35	3.03
85502	80500	1	1.87	2.78	3.27
NA	80505	1 1/4	1.65	2.69	2.76
85512	80510	1 1/2	1.98	3.41	3.48
85517	80515	2	2.55	4.14	4.20

Viega ProPress 45° Elbow Stainless Steel P x P - Models 6026 / 4026


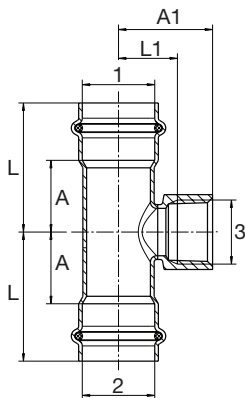
Part No.		Size (in)	A (in)	L (in)
S/S 304	S/S 316	1		
85447	80445	1/2	0.57	1.32
85452	80450	3/4	0.87	1.77
85457	80455	1	0.89	1.79
85462	80460	1 1/4	0.69	1.72
85467	80465	1 1/2	0.82	2.25
85472	80470	2	1.06	2.64

Viega ProPress 45° Elbow Stainless Steel FTG x P - Models 6026.1 / 4026.1


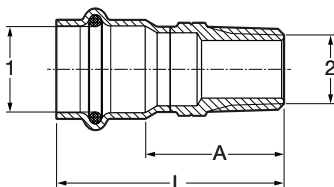
Part No.		Size (in)	A (in)	L (in)	L1 (in)
S/S 304	S/S 316	1			
85537	80535	1/2	0.57	1.32	1.46
85542	80540	3/4	0.69	1.59	2.27
85547	80545	1	0.89	1.79	2.28
NA	80550	1 1/4	0.69	1.72	1.79
85557	80555	1 1/2	0.82	2.25	2.32
85562	80560	2	1.06	2.64	2.71

Viega ProPress Tee Stainless Steel P x P x P - Models 6018 / 4018


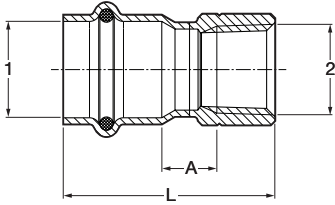
Part No.		Size (in)			A (in)	A1 (in)	L (in)	L1 (in)
S/S 304	S/S 316	1	2	3				
85632	80630	¾	¾	½	0.96	0.98	1.86	1.73
85642	80640	1	1	½	1.13	1.13	2.04	1.88
85652	80650	1	1	¾	1.13	1.10	2.04	2.01
85662	80660	1¼	1¼	½	0.75	1.28	1.78	2.03
85672	80670	1¼	1¼	¾	0.83	1.25	1.86	2.16
85682	80680	1¼	1¼	1	1.04	1.33	2.08	2.24
85692	80690	1½	1½	½	1.26	1.39	2.69	2.14
85702	80700	1½	1½	¾	1.26	1.37	2.69	2.27
85712	80710	1½	1½	1	1.26	1.44	2.69	2.35
85722	80720	2	2	½	0.71	1.65	2.30	2.40
85732	80730	2	2	¾	0.71	1.63	2.30	2.53
85742	80740	2	2	1	0.83	1.70	2.41	2.61
85752	80750	2	2	1½	1.15	1.49	2.73	2.91

Viega ProPress Reducing Tee Stainless Steel P x P x FPT - Models 6017.2 / 4017.2


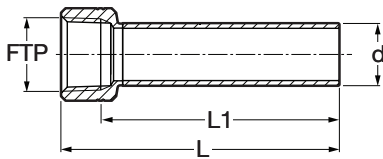
Part No.		Size (in)			A (in)	A1 (in)	L (in)	L1 (in)
S/S 304	S/S 316	1	2	3				
85822	80820	¾	¾	½ FPT	0.96	0.76	1.86	1.26
85832	80830	¾	¾	¾ FPT	0.96	0.78	1.86	1.34
85842	80840	1	1	½ FPT	1.13	0.87	2.04	1.41
85852	80850	1	1	¾ FPT	1.13	0.93	2.04	1.48
85862	80860	1¼	1¼	½ FPT	0.75	1.02	1.78	1.56
85872	80870	1¼	1¼	¾ FPT	0.83	1.08	1.86	1.63
85882	80880	1¼	1¼	1" FPT	1.04	1.09	2.08	1.75
85892	80890	1½	1½	½ FPT	1.26	1.13	2.69	1.67
85902	80900	1½	1½	¾ FPT	1.26	1.19	2.69	1.75
85912	80910	1½	1½	1 FPT	1.26	1.20	2.69	1.87
85922	80920	2	2	½ FPT	0.71	1.39	2.30	1.93
85932	80930	2	2	¾ FPT	0.71	1.45	2.30	2.01
85942	80940	2	2	1 FPT	0.83	1.50	2.41	2.13

Viega ProPress Adapter Stainless Steel P x MPT - Models 6011 / 4011


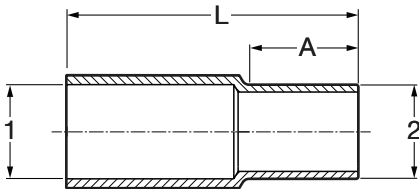
Part No.		Size (in)		A (in)	L (in)
S/S 304	S/S 316	1	2		
85012	80010	½	½ MPT	1.37	2.11
85017	80015	½	¾ MPT	1.44	2.19
85022	80020	¾	½ MPT	1.42	2.32
85027	80025	¾	¾ MPT	1.46	2.36
85032	80030	¾	1 MPT	1.71	2.62
85037	80035	1	¾ MPT	1.47	2.37
85042	80040	1	1 MPT	1.74	2.65
85047	80045	1¼	1¼ MPT	1.89	2.92
85052	80050	1½	1½ MPT	1.94	3.37
85054	80055	2	2 MPT	2.10	3.68

Viega ProPress Adapter Stainless Steel P x FPT - Models 6012 / 4012


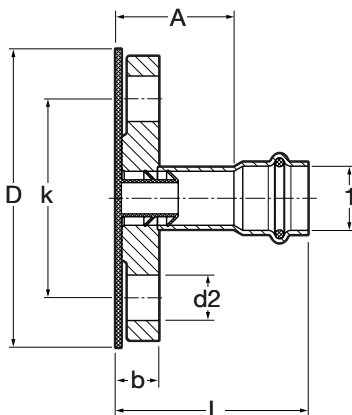
Part No.		Size (in)		A (in)	L (in)
S/S 304	S/S 316	1	2		
85082	80080	½ x ½ FPT		0.54	1.82
85087	80085	¾ x ½ FPT		0.51	1.95
85096	80090	¾ x ¾ FPT		0.57	2.03
85094	80092	1 x ½ FPT		0.62	2.06
85097	80095	1 x ¾ FPT		0.62	2.08
85128	80100	1 x 1 FPT		0.61	2.18
85107	80105	1¼ x 1¼ FPT		0.62	2.33
NA	80110	1½ x 1¼ FPT		0.69	2.80
85117	80115	1½ x 1½ FPT		0.69	2.80
85077	80075	2 x 1 FPT		0.75	2.99
85122	80120	2 x 1½ FPT		0.73	2.99
85127	80125	2 x 2 FPT		0.71	2.99

Viega ProPress Instrument Adapter Stainless Steel - Model 4012.5


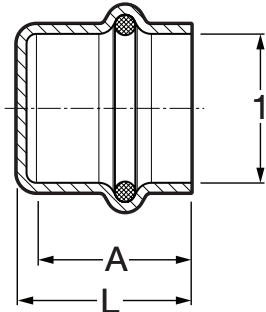
Part No.	Size (in)	L (in)	L1 (in)
S/S 316	FPT x FTG (d)		
80126	½ x ½	4.06	3.52
80127	¾ x ¾	3.94	3.38

Viega ProPress Adapter Stainless Steel BW (IPS) x FTG (CTS) - Model 0113.3


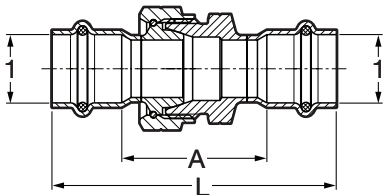
Part No.	Size (in)		A (in)	L (in)
S/S 304	(1) IPS	(2) CTS		
86003	½ ID	½ OD	0.87	2.40
86008	¾ ID	¾ OD	1.02	2.74
86013	1 ID	1 OD	1.06	2.78
86023	1½ ID	1½ OD	1.57	4.12
86028	2 ID	2 OD	1.73	4.27

Viega ProPress Adapter Flange Stainless Steel P x Flange - Models 6059 / 4059


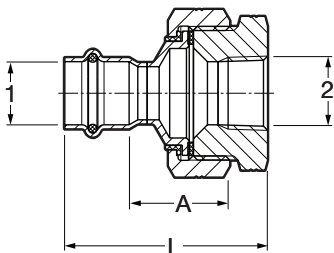
Part No.		Size (in)	b (in)	A (in)	L (in)	k (in)	D (in)	d2 (in)
S/S 304	S/S 316	1						
86082	81035	½	0.46	1.72	2.46	2.36	3.54	0.63
86087	81040	¾	0.52	1.66	2.57	2.76	3.94	0.63
86092	81045	1	0.58	1.60	2.51	3.11	4.33	0.63
86097	81050	1¼	0.64	1.66	2.69	3.50	4.53	0.63
86102	81055	1½	0.70	1.41	2.83	3.86	4.92	0.63
86107	81060	2	0.77	2.30	3.86	4.76	5.91	0.75

Viega ProPress Cap Stainless Steel P - Models 6056 / 4056


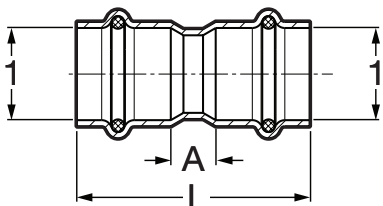
Part No.		Size (in)	A (in)	L (in)
S/S 304	S/S 316	1		
85357	80355	1/2	0.70	0.82
85362	80360	3/4	0.93	1.04
86367	80365	1	0.94	1.06
86372	80370	1 1/4	1.04	1.20
86377	80375	1 1/2	1.44	1.59
86382	80380	2	1.59	1.74

Viega ProPress Union Stainless Steel P x P - Models 6060 / 4060


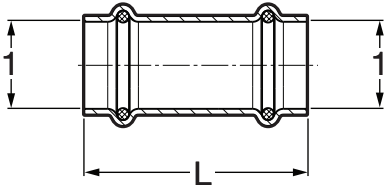
Part No.		Size (in)	A (in)	L (in)
S/S 304	S/S 316	1		
86007	81005	1/2	1.87	3.37
86012	81010	3/4	1.89	3.70
86017	81015	1	2.25	4.06
86022	81020	1 1/4	2.25	4.31
86027	81025	1 1/2	2.68	5.53
86032	81030	2	2.95	6.12

Viega ProPress Di-electric Union Stainless Steel P x FPT - Model 4067


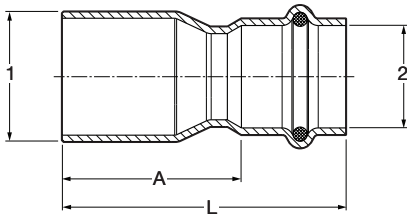
Part No.	Size (in)	A (in)	L (in)
S/S 316	1 2		
80071	1/2 x 1/2 FPT	1.28	2.57
80078	3/4 x 3/4 FPT	1.39	2.85
80073	1 x 1 FPT	1.25	2.81
80074	1 1/4 x 1 1/4 FPT	1.33	3.04
80076	1 1/2 x 1 1/2 FPT	1.54	3.64
80077	2 x 2 FPT	1.72	4.00

Viega ProPress Coupling with Stop Stainless Steel P x P - Models 6015 / 4015


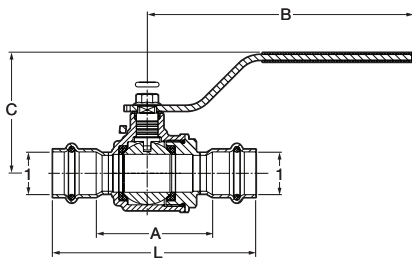
Part No.		Size (in)	A (in)	L (in)
S/S 304	S/S 316	1		
85267	80265	1/2	0.35	1.85
85272	80270	3/4	0.43	2.24
85277	80275	1	0.39	2.20
85282	80280	1 1/4	0.47	2.54
85287	80285	1 1/2	0.36	3.21
85292	80290	2	0.47	3.64

Viega ProPress Coupling No Stop Stainless Steel P x P - Models 6015.5 / 4015.5


Part No.		Size (in)	L (in)
S/S 304	S/S 316	1	
85312	80310	1/2	1.87
85317	80315	3/4	2.27
85322	80320	1	2.19
85327	80325	1 1/4	2.54
85332	80330	1 1/2	3.27
85337	80335	2	3.66

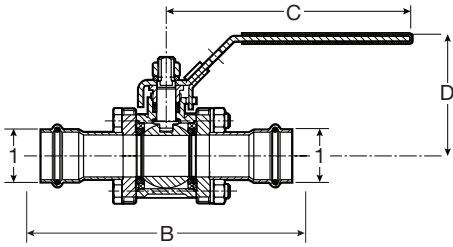
Viega ProPress Reducer Stainless Steel FTG x P - Models 6015.1 / 4015.1


Part No.		Size (in)	A (in)	L (in)
S/S 304	S/S 316	1 2		
85162	80160	3/4 x 1/2	1.54	2.28
85167	80165	1 x 1/2	1.84	2.59
85172	80170	1 x 3/4	1.56	2.46
85173	80175	1 1/4 x 1/2	2.25	3.00
85182	80180	1 1/4 x 3/4	1.93	2.83
85187	80185	1 1/4 x 1	1.81	2.72
85192	80190	1 1/2 x 1/2	3.03	3.78
85197	80195	1 1/2 x 3/4	2.64	3.54
85202	80200	1 1/2 x 1	2.50	3.41
NA	80205	1 1/2 x 1 1/4	2.26	3.29
85212	80210	2 x 1/2	3.75	4.50
85217	80215	2 x 3/4	3.48	4.39
85222	80220	2 x 1	3.08	3.99
NA	80225	2 x 1 1/4	2.94	3.97
85232	80230	2 x 1 1/2	2.59	4.02

Viega ProPress Ball Valve Stainless Steel P x P - Model 4070


Part No.	Size (in)	A (in)	L (in)	B (in)	C (in)
S/S 316	1				
81080	1/2	2.06	3.56	5.55	2.44
81085	3/4	2.42	4.23	5.55	2.52
81090	1	2.76	4.59	5.55	2.68
81095	1 1/4	3.17	5.23	6.10	3.09
81100	1 1/2	3.65	6.50	6.10	3.34
81105	2	4.15	7.32	6.10	3.66

Viega ProPress 3-Piece Ball Valve Stainless Steel P x P - Model 4370.8



Part No.	Size (in)	B (in)	C (in)	D (in)
S/S 316	1			
85132	1/2	5.41	3.99	2.28
85133	3/4	5.79	5.88	2.85
85134	1	6.00	5.88	2.93
85136	1 1/4	6.61	7.54	3.27
85137	1 1/2	7.26	7.54	3.57
85138	2	9.67	7.54	3.89

V Viega LLC
 585 Interlocken Blvd.
 Broomfield, CO 80021

Phone (800) 976-9819
www.viega.us

DD-PP 0319 ProPress Stainless

